

ACCESS SERIES

LED INDOOR DISPLAY SOLUTION

ECONOMICAL · FLEXIBLE · ACCESSIBLE



SAVE COST

Cost-effective display solution



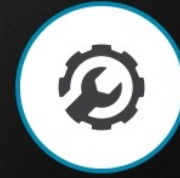
FLEXIBILITY

Options of size for optimal flexibility



RELIABILITY

Save, Strict quality control



PROFESSIONAL

Best-in-class technical consultation
and supports



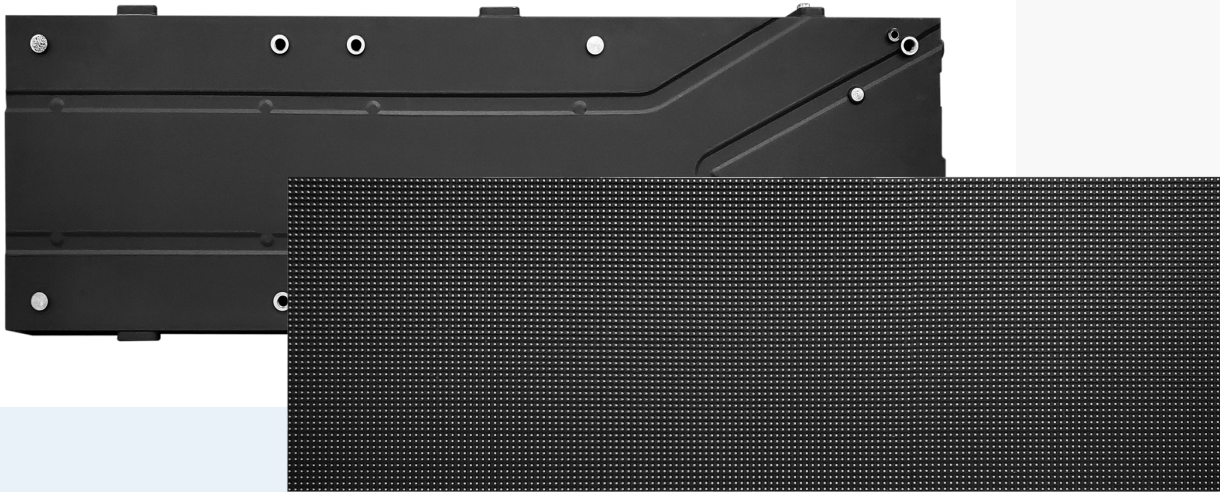
NO SCANLINE

High refresh rate to avoid scanline
via photo-taking by phone

SPECIFICALLY TAILORED FOR INDOOR USE

Application examples: Retail store; Bank; Church; Meeting room; Airport





WHAT IS ACCESS SERIES?

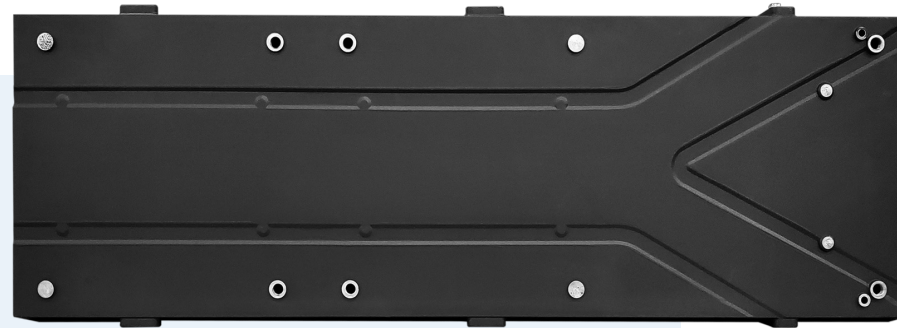
Access Series is an economical LED display solution. It comes with various cabinet dimensions to apply to different corners of the retail space, building an inviting, interesting, and engaging environment for shoppers to enhance their purchase experience. With accessible price, the series delivers reliable performance, strict quality control, and first-rate technical support.



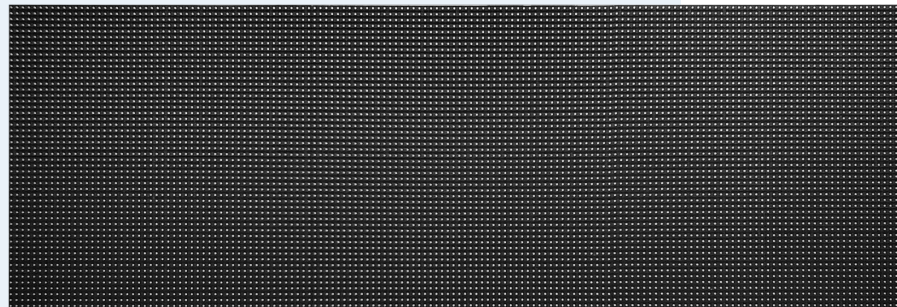
COST EFFECTIVE DISPLAY SOLUTION

❖ SLIM & LIGHT WEIGHT

The Access Series is just 45mm (or 58mm for AC3.9) in thickness, which not only does reduce its weight but also makes it highly convenient for installation and mounting. It can be directly mounted on the wall, eliminating the need for extra support structures or mounting equipment. This saves on costs and maximizes the available space.



(Back)



(Front)



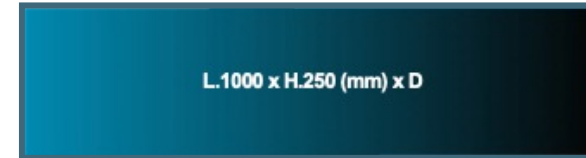
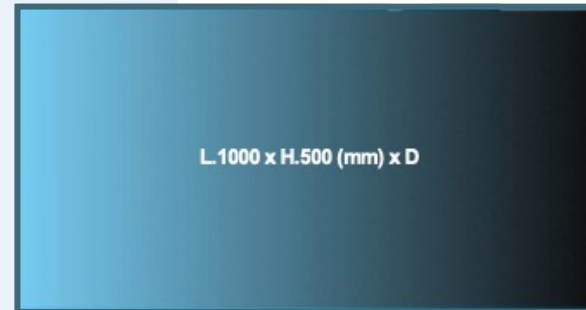
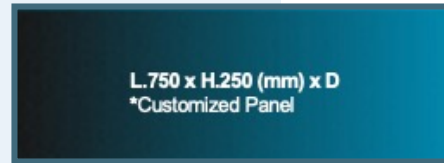
(Side)



OPTIMAL FLEXIBILITY

❖ 6 DIFFERENT SIZES AVAILABLE

Access Series offers a variety of options when it comes to cabinet sizes and shapes for building displays. With 6 different choices available, users have the flexibility to create brilliant and visually appealing displays that suit specific needs. Whether it's a large or small space, the Access Series ensures that there are design options available to meet the requirements of any setting.





STRICT SAFETY QUALITY CONTROL



**HIGH VOLTAGE
PROTECTION**

SAFE

Connecters are used on all cable connections instead of screw terminals.



**POWER QUALITY
ASSURANCE**

SAFE from power quality

The series uses Power Supply Unit which features with Power Factor Correction function to maintain a good power quality environment.

❖ PFC & PSU PROTECTION

Incorporating Power Supply Unit (PSU) with both Power Factor Correction (PFC), inrush current protection and over voltage protection features, the screen is safeguarded against potential damage against electricity hazards. This helps extend the lifespan of the screen and ensures its reliable operation over time

BEST-IN-CLASS TECHNICAL SUPPORTS



Our technical team and global strategic partners provide professional and on-time support on installation, maintenance, and technical aspects to ensure a smooth operation.



AVOID SCANLINE DURING PHOTO-TAKING

Scanlines often occur when there is a mismatch between the frequency of the lighting and the refresh rate of the camera sensor.

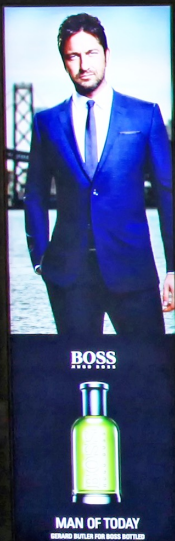
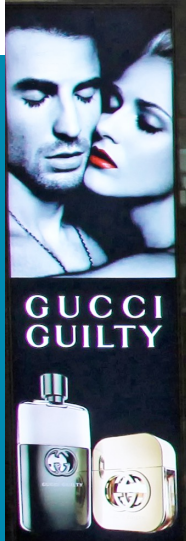
Access Series achieves high refresh rate which avoids scan line when taking photos or video via mobile phone.

- ✓ **Better image quality**
- ✓ **Enhanced viewing experience**
- ✓ **Better appreciation of fine details**
- ✓ **Professional presentation with clear screen**

REFERENCES



REFERENCES



REFERENCES



REFERENCES



Visual Characteristics

AC1.25

AC1.6

AC1.9

AC2.6

AC3.9

Brightness	nits	800	800	1,000	1,000	1,000
Viewing Angle-H (50% brightness)	deg.	140(+70/-70)				140(-70/+70)
Viewing Angle-V (50% brightness)	deg.	140(+70/-70)				130(-65/+65)
Visual Viewing Angle – Horizontal	deg.	160(-80/+80)				
Visual Viewing Angle – Vertical	deg.	140(-75+65)				
Refresh Rate ** no SCAN LINE for photography	Hz	≥2560 Hz	≥2560 Hz	≥2880 Hz	≥2880 Hz	≥3840 Hz
Pixel Configuration	R / G / B	3 in 1 SMD				
Visual Resolution	mm	1.25	1.5625	1.953	2.604	3.91
Processing Depth	bit	14	13	13	14	14

Modular Characteristics

Aspect Ratio		1:1					
Panel Dimension (W x H X D)	mm / ft.	1000 x 250 x 45 / 3.28 x 0.82 x 0.16 1000 x 500 x 45 / 3.28 x 1.64 x 0.16 750 x 250 x 45 / 2.46 x 0.82 x 0.16 * 750 x 500 x 45 / 2.46 x 1.64 x 0.16 * 500 x 250 x 45 / 1.64 x 0.82 x 0.16 * 500 x 500 x 45 / 1.64 x 1.64 x 0.16			1000 x 250 x 58 / 3.28 x 0.82 x 0.2 1000 x 500 x 58 / 3.28 x 1.64 x 0.2 750 x 250 x 58 / 2.46 x 0.82 x 0.2 * 750 x 500 x 58 / 2.46 x 1.64 x 0.2 * 500 x 250 x 58 / 1.64 x 0.82 x 0.2 * 500 x 500 x 58 / 1.64 x 1.64 x 0.2		
		* Customized Panels					
Panel Surface Area	sqm / sq.ft.	0.25 / 2.69 0.50 / 5.38 0.19 / 2.05 0.38 / 4.09 0.13 / 1.40 0.25 / 2.69					
No. of Pixels Per LED module (W x H)		200 x 200	160 x 160	128 x 128	96 x 96	64 x 64	

Ingress Protection (Front / Rear)	IP	IP20/IP20				
Lifetime (50% brightness)	Hours	≥100,000				
Operating / Storage Temperature	deg. C	-20/-40				

THANK YOU

Lighthouse Technologies Limited



(+852) 2192-1688 info@lighthouse-tech.com