

Infinity

PvII+

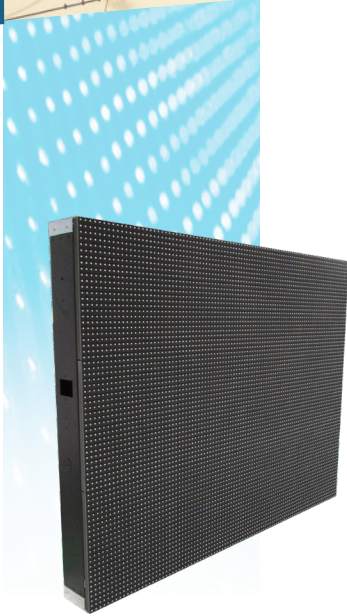
4mm/ 6mm /10mm

Permanent

Indoor

SMD LED

Panel












Lighthouse's latest PvII+ series provides the professional LED display solutions to enhance your public profile and brand image.

Three pixel pitch options 4mm, 6mm and 10mm are available, making the PvII+ series ideal for different indoor applications, such as stadia, arenas, exhibitions, and retail shops.

With true 2,000 nits of brightness, extra wide viewing angles, 16-bit color processing, and Lighthouse's proprietary M4 technology, the PvII+ series delivers ultra-uniform and subtle image quality.

A slim, flexible casing design enables the PvII+ series to fulfill special requirements and overcome a wide range of project challenges, from center-hung arena installations to the special design demands of retail venues.

-  Stadiums
-  Indoor Arenas
-  TV studios
-  Conference Centers
-  Transportations
-  Shopping Malls
-  Advertising
-  Branded Shops
-  Corporate Facilities

Infinity

PvII+

Configurations



Novastar System

CAT5e



PvII4+ /PvII6+ /PvII10+

10 x 10	9.60m (31.50ft.) x 9.60m (31.50ft.)
9 x 9	8.64m (28.35ft.) x 8.64m (28.35ft.)
8 x 8	7.68m (25.20ft.) x 7.68m (25.20ft.)
7 x 7	6.72m (22.05ft.) x 6.72m (22.05ft.)
6 x 6	5.76m (18.90ft.) x 5.76m (18.90ft.)
5 x 5	4.80m (15.75ft.) x 4.80m (15.75ft.)
4 x 4	3.84m (12.60ft.) x 3.84m (12.60ft.)
1 x 1	0.96m (3.15ft.) x 0.96m (3.15ft.)

Input source



DVI

	PvII 4+	PvII 6+	PvII 10+	
Visual Characteristics				
Brightness	nits	2,000		
Visual Viewing Angle - Horizontal	deg.	160 (+80 / -80)		
Visual Viewing Angle - Vertical	deg.	140 (+70 / -70)		
Pixel Configuration	R/G/B	SMD 3-in-1		
Pixel Pitch	mm	4.0	6.0	10.0
Processing Depth	bit	16		
Modular Characteristics				
Aspect Ratio		1:1		
Panel Width	mm / ft	960/ 3.15		
Panel Height	mm / ft	960/ 3.15		
Panel Surface Area	sq.m / sq.ft	0.92 / 9.9		
Pixel Resolution	w x h	240 x 240	160 x 160	96 x 96
Environmental				
Ingress Protection (Front / Rear)	IP	IP40 / IP20		
Lifetime (50% brightness)	hrs	≥100,000		

* Lighthouse reserves the right to change any specifications without notice.

Lighthouse Technologies Ltd.

Headquarters: T+852 2192 1688 F+852 2423 1092 E:info@lighthouse-tech.com www.lighthouse-tech.com

Copyright © 2020 Lighthouse Technologies Ltd. All rights reserved.

LHMKT-20-08