

THE IMPACT OF LIGHTHOUSE

PHOTO REFERENCE BOOK



Lighthouse Technologies Limited
Global Website: www.lighthouse-tech.com
US Website: www.lighthouse-nasa.com
Email: info@lighthouse-tech.com
Facebook: <http://www.facebook.com/LighthouseLED>
Twitter: <http://twitter.com/LighthouseLED>
Tel: +852 2192 1688





Digital signage

Designed for permanent installation
True color reproduction, robust and reliable



Impact series

High brightness SMD outdoor LED panel
Front and rear access, M5 LED failure diagnostics system



Greenline™ series

Environmental friendly product
Ultra-high contrast ratio, extra low power consumption



VideoBlades™ 12

Creative lighting applications
Roll up and down function



DuoLED series

Award-winning see-through product, duo usage
Ultra light and slim for easy installation

P. 3 - 4 About Lighthouse

P. 5 - 6 How to choose a LED screen ?

P. 7 - 42 Digital Signage

P. 43 - 76 Events & Entertainment

P. 77 - 116 Sports

About LIGHTHOUSE

Lighthouse Technologies Limited is a global leader in LED video technology that develops, manufactures, and markets LED video screen solutions for multiple indoor & outdoor applications, including digital signage, media and entertainment events, and sports arenas across the globe. With numerous technological breakthroughs to its name, Lighthouse has established itself as a multi award-winning leader in the LED video industry that holds itself to the highest standards of quality.

Founded in 1998, Lighthouse has a strong global presence with regional offices in Europe, North and South America, the Asia Pacific and China. Lighthouse employs the most advanced technology, the highest quality manufacturing facilities, and world-class, round-the-clock technical support, to ensure that its LED video screens continue satisfying customers on every major continent and captivating the imagination of millions.



1. Location

Lighthouse screens can be used in most locations and situations, no matter how inaccessible or awkward they may seem. Both small and large panel sizes are available to aid tight access and speed up installation times. Transparent panels, ultra slim creative products that can be wrapped around awkward shapes and those with integral systems for quick and easy set up are all available.

2. Pixel pitch

Choosing the correct pixel pitch is important to insure clear images for your closest viewers and is calculated by measuring the minimum viewing distance from the screen. There are many detailed and complicated formulas to calculate minimum viewing distance but one simple rule is to multiply the pixel pitch by 1000. For example, 10mm pixel pitch x 1000 = 10,000mm = 10m.

Selecting the correct pixel pitch is vital to ensure that ALL your audience experiences clear, sharp images.

3. Viewing angle

Just as with pixel pitch, it is important to know your audience. If your audience is looking at the screen from the sides, above, or below, wider viewing angles are needed. For these situations it is important to evaluate your viewing angle requirements and select the appropriate product. Lighthouse manufactures products with a wide range of viewing angles. Surface Mount Device (SMD) panels have the widest viewing angles.

4. Ambient light levels

Selecting a display with adequate brightness will insure all of your audience will see sharp clear images not washed out by the ambient light. Knowing the range of ambient light levels around the display is important in selecting the correct brightness. If a screen is going to be in a situation where ambient light levels are high, for example in direct sunlight, 6000 nits or greater are required. The Impact series, with its 6000 nits of brightness, is the ideal product in these high ambient light environments. If the screen is indoors, products such as the Pi4-B and Pi6-B (4mm and 6mm black faced panels with fantastic contrast ratios) are more appropriate.

5. Climate

Again, know your environment. A screen that is going to experience adverse weather conditions needs to be waterproof, able to cope with extremes of temperature, and still perform reliably. Impact, for example, is an outdoor screen that utilizes waterproof SMD lamps. These lamps are ideal in harsh climates and also eliminate the fading effects seen on other screens.

How to choose

When specifying a screen for any project, there are a number of considerations

a LED screen?

you need to take into account to ensure you choose the most appropriate product:

6. Reliability

Components such as the LED & PSU degrade from time to time. A screen that looks great on the first day does not mean a continuous performing screen. Examine the track record of the manufacturer when evaluating long term reliability. Lighthouse has many screens installed and operating for 10+ years and are still going strong.

7. After-sales service

On-site support – Problems usually happen at inconvenient times. Lighthouse always provides our customers with full support. With our global coverage, our technical expertise will assist you anytime and anywhere.

8. Processing

Color, color accuracy, color uniformity, processing depth, and refresh speeds are the key elements in video processing.

Calibration is important. Many LED display providers claim to have calibrated systems, however many of them are limited to only brightness correction. Lighthouse patented and proven M5 system has the uniqueness of matching both brightness and color. This makes previously unavailable color and brightness matching achievable.

Color depth. 16-bit color processing is the market standard. Customers need to ensure that the entire brightness range is available with 16-bit processing. Some suppliers might not have full 16-bit from 1% to 100% brightness. Many suppliers claim to have 16-bit processing but have other parts of the system that have 8-bit or lower processing rates. "The system is only as good as the weakest link". Lighthouse has complete 16-bit processing front to back.

9. Safety Certificates

Beware of non-genuine certificates. In general, individual certificates apply to each unique product. It should state clearly on the certificate report about the usage of all electronic components, from LED selection to power source distribution. Make sure a valid certificate is obtained through well accepted, industry standard, and recognized certification organizations. Do not be tricked by illegal vendor.

10. Environmental Friendly

All Lighthouse screens are manufactured ISO14001, ROHS ready, and have low power consumption.

Create Impact in Digital Signage



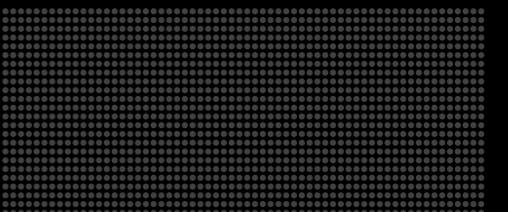


Digital Signage

Designed for permanent installations, Lighthouse's LED digital signage screens can be installed in an almost infinite variety of locations, indoor or outdoor, flat or curved. The only limit is your imagination.

With true-to-life image quality, high brightness, superior color correction, flawless panel alignment and M5 technology for remote diagnostics, Lighthouse digital signage screens are the ultimate solution for ensuring that your message - be it news, advertising, televised coverage or many other applications - is broadcast flawlessly.

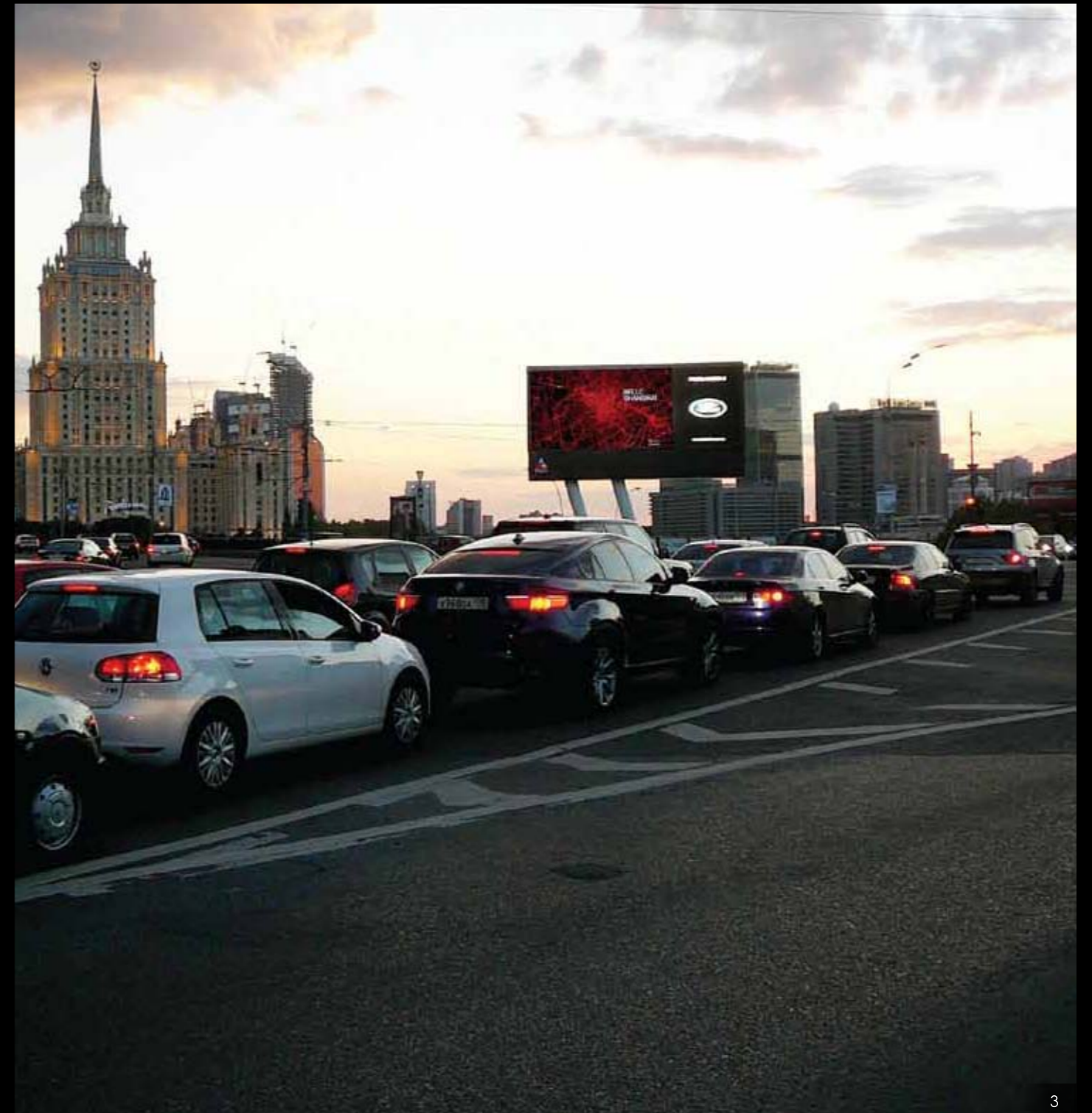
Lighthouse screens can be installed into most locations, no matter how inaccessible or awkward they may seem. "Impact" has the advantage of both front and rear access for places that have tight access or for screens that are wall mounted; "Bar", which is versatile, transparent and can be arranged in any form or configuration, is an ideal product for rooftop situations. "Tile" is an ultra slim, creative product that can be installed where minimum thickness is required, for example on the side of a vehicle. The roll up and detachable nature of "VideoBlades™" provides the ability to wrap uneven surfaces or building facades, or use the individual blades singly or in groups as set lighting fixtures.





- 1 **Tbilisi Concert Hall, Georgia**
12.5mm - 14.4m (W) x 8.4m (H)
47.2' (W) x 27.6' (H)
- 2 **Shidax, Japan**
2 sets of 20mm screen each at
0.96m (W) x 8.96m (H)
3.15' (W) x 29' (H)
- 3 **Commercial Bank of Qatar, Doha**
6mm - 5.12m (W) x 3.84m (H)
16.8' (W) x 12.6' (H)
- 4 **Multiplex cinema Cinecity Art & Cinema, Italy**
10mm - 5.76m (W) x 3.36m (H)
18.9' (W) x 11' (H)

- 1 Entry roads to Schaan, Liechtenstein**
4 sets of 10mm screen each at
1.92m (W) x 1.44m (H)
6.3' (W) x 4.7' (H)
- 2 Bolshaia Dorogomilovskaia, Russia**
10mm -14.08m (W) x 4.8m (H)
46.2' (W) x 15.7' (H)
- 3 Kutuzovskiy prospekt, Russia**
Front Screen:
10mm -15.36m (W) x 5.76m (H)
50' (W) x 18.9' (H);
Side Screen:
10mm -1.28m (W) x 5.76m (H)
4.2' (W) x 18.9' (H)



Digital Signage

Out of Home Media



1



2



3

- 1 **Causeway Place, Hong Kong**
6mm - 3.2m (W) x 1.92m (H)
10.5' (W) x 6.3' (H)
- 2 **Urban Terrace, Japan**
20mm - 5.12m (W) x 0.96m (H)
16.8' (W) x 3.1' (H)
- 3 **Media House, Australia**
12.5mm - 14.4m (W) x 8.4m (H)
47.2' (W) x 27.6' (H)



Two Towers East

“ We have worked with Lighthouse Technologies screens on a number of our digital signage projects, the Two Towers East being the latest. This site is designed to appeal to top tier brands and is in a strategic position at the gateway of Canary Wharf, which has year round value for advertisers and is also perfectly located for the 2012 Olympics. We have to be able to offer our clients the very best in screen quality, with crystal clear images and stunning colour reproduction. Lighthouse has consistently provided us with exactly that. ”
Mark Bracey, Development Director at Ocean Outdoor

- 1 **Two Towers East, UK**
4 sets of 7mm screen each at
5.1m (W) x 7.6m (H)
16.7' (W) x 24.9' (H)
- 2 **Axis @ The Hacienda, UK**
2 sets of Impact 12 screen each at
3.04m (W) x 5.76m (H)
10' (W) x 18.9' (H)





- 1 **Hammersmith Flyover, UK**
4 sets of 7mm screen each at
5.08m (W) x 7.62m (H)
16.7' (W) x 25' (H)
- 2 **Over-bridge at the north-eastern
corner of the Westfield, UK**
2 sets of 16mm screen each at
10.16m (W) x 3.05m (H)
33.3' (W) x 10' (H)
- 3 **A4 Tower, UK**
2 sets of 7mm screen each at
6.1m (W) x 6.1m (H)
20' (W) x 20' (H)





1 **Holland Park roundabout, UK**
3 sets of 16mm screen each at
12.24m (W) x 3.04m (H)
40.2' (W) x 10' (H)

2 **Southern Terrace, Westfield, UK**
7mm -12.24m (W) x 4.56m (H)
40' (W) x 15' (H)

3 **Westfield car park, UK**
3 sets of 20mm screen each at
8.96m (W) x 4.8m (H)
29' (W) x 15.7' (H)



Euston Underpass

“The majority of our projects have been with Lighthouse screens, we know the product very well and Lighthouse is the only company that has been out there in large format for any length of time, so we know they're reliable. We also know how they go together - they go together very well - and they have got to a stage where they are literally just plug in and play, which again saves us time.”

says Simon Grice, owner of [Solutions in Steel](#).

“This is a premium site within the UK's capital. The technology that's been used is also premium quality, which is a must for the type of brands that we want to attract to advertise there. The Lighthouse Impact 12 provides fantastic colour rendition, which means that each brand's image is going to be accurately represented. And that makes our job so much easier.”

says Grant Branfoot, sales director at [Outdoor Plus](#).

- 1 **Euston Underpass, UK**
2 sets of Impact 12 screen each at
12.3m (W) x 3.5m (H)
40.4' (W) x 11.5' (H)
- 2 **Hammersmith Broadway, UK**
2 sets of 10mm screen each at
3.2m (W) x 5.76m (H)
10.5' (W) x 18.9' (H)



Vivienne Tam

“Vivienne Tam loves transforming traditional styles to appeal to modern consumers, and the addition of our new Lighthouse screen helps deliver that unique look with much greater impact,” said Mr Scott Crolla, **Vivienne Tam**. “When we see visitors stop just to look at the impressive visuals the new screen provides, we realize the screen actually makes a difference in how people see the Vivienne Tam brand.”

- 1 **Chanel, Shanghai**
4mm - 2.56m (W) x 3.36m (H)
8.4' (W) x 11' (H)
- 2 **Chanel, Hong Kong**
6mm - 3.2m (W) x 3.84m (H)
10.5' (W) x 12.6' (H)
- 3 **Chanel, Singapore**
4mm - 2.56m (W) x 2.4m (H)
8.4' (W) x 7.9' (H)
- 4 **Vivienne Tam, Hong Kong**
4mm - 0.64m (W) x 3.84m (H)
2.1' (W) x 12.6' (H)

Digital Signage

Retail Shops / Shopping Malls



- 1 **Christian Dior flagship store, Hong Kong**
10mm - 8.13m (W) x 4.57m (H)
26.7' (W) x 15' (H)
- 2 **Christian Dior, Hong Kong**
6mm - 1.28m (W) x 1.92m (H)
4.2' (W) x 6.3' (H)
- 3 **Christian Dior, Singapore**
6mm - 1.28m (W) x 2.4m (H)
4.2' (W) x 7.9' (H)
- 4 **Ermenegildo Zegna, China**
6mm - 1.92m (W) x 4.32m (H)
6.3' (W) x 14.2' (H)
- 5 **Gucci, Hong Kong**
10mm - 7.68m (W) x 2.4m (H)
25.2' (W) x 7.9' (H)



apm

“We had already worked with Lighthouse Technologies on several projects and always found them very helpful and professional. Recently, we installed a Lighthouse 4mm LED screen at apm shopping centre in Hong Kong. The picture quality is stunning and attracts the eyes of thousands of shoppers every day. We are very pleased with the result.”

- 1 **apm, Hong Kong**
4mm - 7.04m (W) x 3.84m (H)
23' (W) x 12.6' (H)
- 2 **iSQUARE, Hong Kong**
10mm - 3.84m (W) x 2.4m (H)
12.6' (W) x 7.9' (H)



Digital Signage

Retail Shops / Shopping Malls



- 1 **Mikiki Mall, Hong Kong**
4mm - 5.76m (W) x 3.36m (H)
19' (W) x 11' (H)
- 2 **Grand Pacific Mall, China**
20mm - 52.48m (W) x 13.44m (H)
172' (W) x 44' (H)
- 3 **Allee Shopping Center
exterior screen, Hungary**
12.5mm - 6.4m (W) x 4.8m (H)
21' (W) x 15.7' (H)



1



2



3



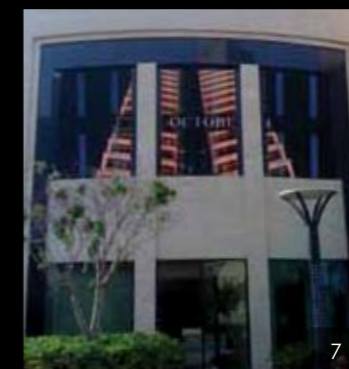
4



5



6



7

- 1 **Shenyang Shopping Center, China**
6mm - 5.76m (W) x 10.08m (H)
18.9' (W) x 33' (H)
- 2 **Jin Qiao International Shopping Mall, China**
2 sets of 16mm screen each at
6.1m (W) x 3.81m (H)
20' (W) x 12.5' (H)
- 3 **Jin Qiao International Shopping Mall, China**
16mm - 5.08m (W) x 3.05m (H)
16.7' (W) x 10' (H)
- 4 **Jin Qiao International Shopping Mall, China**
16mm - 5.08m (W) x 3.81m (H)
16.7' (W) x 12.5' (H)
- 5 **Jin Qiao International Shopping Mall, China**
16mm - 4.06m (W) x 3.05m (H)
13.3' (W) x 10' (H)
- 6 **La Tenutella's food court, Italy**
10mm - 4.48m (W) x 2.4m (H)
14.7' (W) x 7.9' (H)
- 7 **DLF mall, India**
3 sets of 7mm screen each at
2.03m (W) x 3.05m (H)
6.7' (W) x 10' (H)



Carphone Warehouse

“We chose the Lighthouse screen based on price, quality and longevity of the screen – we wanted a product that would still be as bright and reliable in five years time as it was when we installed it.”
says Rob Murray at **Carphone Warehouse**.

- 1 **Carphone Warehouse, UK**
Impact 12 - 18.43m (W) x 5.76m (H)
60' (W) x 19' (H)
- 2 **City Harvest Church, Singapore**
DuoLED 12 - 48.3m (W) x 5.76m (H)
158' (W) x 19' (H)



1 Nokia Club, US

45 sets of 10mm screen each at
0.64m (W) x 0.48m (H)
2.1' (W) x 1.6' (H)

2 Bloomberg, France

4mm - 3.2m (W) x 1.92m (H)
10.5' (W) x 6.3' (H)





- 1 **AIA Central, Hong Kong**
6mm - 3.84m (W) x 2.88m (H)
12.6' (W) x 9.4' (H)
- 2 **Chrysler Dealership, US**
3 sets of 16mm screen: total square
meter of each screen - 14.17 sqm



Chrysler Dealership

“The Los Angeles Motor Village goes above and beyond the traditional Chrysler Group dealership, this dealership creates a presence both inside and out. Our customers will experience our brands in unique salons that reflect each brand's identity and character.”
said Peter Grady, **Chrysler Group's** Vice President of Network Development & Fleet.



Galaxy Macau™

“It is very important that the LED screens used in the projects such as Galaxy Macau™ are of the highest quality. Following our first cooperation with Galaxy Entertainment Group in the project of StarWorld Hotel and Casino in 2008, we continue to receive great responses after the installation of the LED screens in the casino of Galaxy Macau™.”
comments Lighthouse's Managing Director, Peter Chan.

- 1 Annex Outdoor Façade, Galaxy Macau™**
6 sets of Impact 12 screen each at
6.14m (W) x 3.46m (H)
20' (W) x 11.4' (H)
- 2 Indoor Day Tripper Area Galaxy Macau™**
2 sets of 6mm screen each at
6.4m (W) x 4.8m (H)
21' (W) x 15.7' (H)
- 3 Entrance, Galaxy Macau™**
2 sets of 10mm screen each at
12.8m (W) x 9.6m (H)
42' (W) x 31.5' (H)



Create Impact in Events & Entertainment



Easy for Installation



Events & Entertainment

The ideal solution for rental companies who need screens to relay live events or functions, Lighthouse LED panels are available for both indoor and outdoor event or temporary installations.

Lighthouse rental screens are available in a wide variety of creative formats. They are light weight, easy to handle, easy to transport, easy to erect, and easy to dismantle. These are a few key advantages but there is more...

"DuoLED" can be used in two formats: see through; or as a standard panel. This dual purpose minimizes inventory requirement. Using one flexible, versatile product saves on both storage and transportation costs and gives an extremely quick return on investment.

The revolutionary **"VideoBlades™"** product has been designed for highly unique and innovative applications. Live footage can be shown on the screen either raised or lowered from an extremely quick and easy to use roll up or roll down system. This system has the fastest set up speed in the world. A very large screen can be set up in just a few minutes.

All of these products share the high brightness, optimum image quality and superior color uniformity for which Lighthouse LED panels are renowned. With a wide product range to choose from, rental companies just decide which product best fits their needs and maximum return on investment is assured.

Events & Entertainment

Motor Shows & Events



1

IDEX

“ IDEX 2011 Opening Ceremony is the largest military events in Middle-East and Africa. Lighthouse's R7-ER has been particularly chosen by its superb image quality that meets all parties' expectations. By serving high-end requirements, Full High Definition Display is a must and R7-ER has given the answer to it all. After the big success of the show, JM Rental has received significant number of requirements for R7-ER. At this moment, there's no way to select any other outdoor panels besides this model, its performance is more than just outstanding. ”
said Kenneth Yip, Head of **JM Rental Limited**.

1 Opening Ceremony of International Defence Exhibition & Conference 2011 (IDEX 2011), UAE

2 sets of 7mm screen each at
30.48m (W) x 6.1m (H)
100' (W) x 20' (H)

2 sets of 7mm screen each at
12.19m (W) x 6.86m (H)
40' (W) x 23' (H)''

2 Bidvest 2008, South Africa

Backdrop:
8 sets of 16mm screen each at
1.02m (W) x 3.04m (H)
3.3' (W) x 10' (H)
Roof Truss:
16mm - 8 by 4 panels on the roof truss

3 Positive Rocks 2008, South Africa

7 sets of 16mm screen each at
1.02m (W) x 5.32m (H)
3.3' (W) x 17.5' (H)



2



3

Events & Entertainment

Motor Shows & Events



Shanghai World Expo

“On the very first day of the Expo, we overheard many of the visitors remarking how amazing the LED screens at the Macau Urban Best Practice Area were. We selected the R4 screens because we needed the very best visual quality to ensure our work delivered full impact, and have fully lived up to our expectations.” said Angus Chu, founder and managing director, **DBIS**.

- 1 **Shanghai World Expo, China**
4mm screen
- 2 **WWC 2010, Malaysia**
16mm - 20.4m (W) x 9.12m (H)
70' (W) x 30' (H)



Events & Entertainment

Motor Shows & Events



- 1 **Royal Wedding, UK**
2 sets of 7mm screen each at 80m² and 40m²
- 2 **Berlin's Fall of the Wall celebrations, Germany**
2 sets of 7mm screen
- 3 **Ad Ministry**
- 4 **Bank of China, China**
16mm - 7.11m (W) x 9.12m (H)
23.3' (W) x 30' (H)



Events & Entertainment

Motor Shows & Events

1 **Business of Design Week 2011, Hong Kong**

4mm - 5.76m (W) x 3.84m (H)
18.9' (W) x 12.6' (H)

2 **Annual Awards Gala Dinner 2011, Hong Kong**

4mm - 4.48m (W) x 3.36m (H)
14.7' (W) x 11' (H)

3 **Democratic Nominee event, US**

2 sets of 7mm screen each at
3.06m (W) x 4.57m (H)
10' (W) x 15' (H)



1



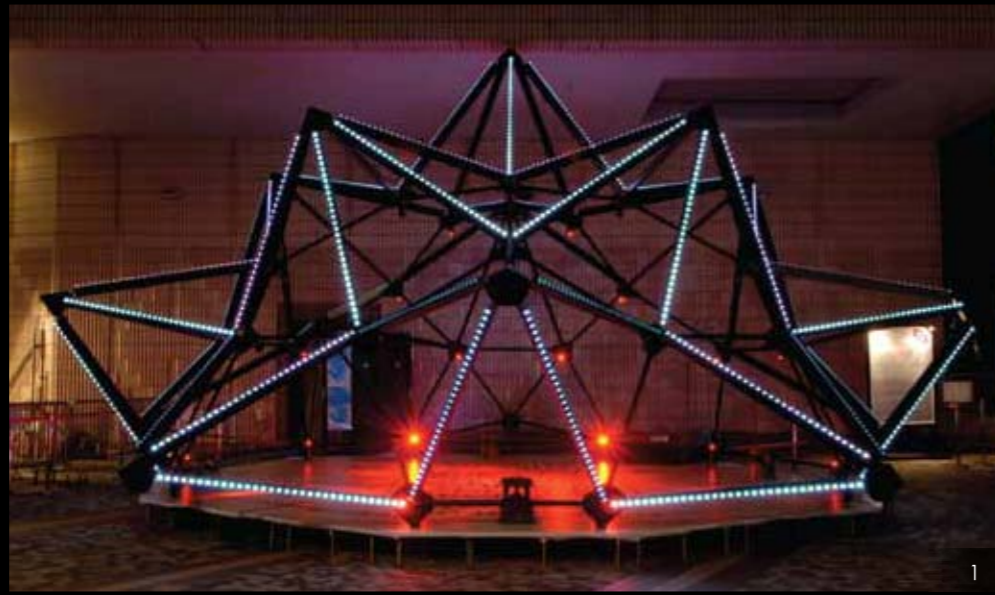
2



3

Events & Entertainment

Motor Shows & Events



1



2



3

- 1 **A-Glow-Glow, Marco Interactive Media Arts Exhibitions, Hong Kong**
80 pieces of LED Bar
- 2 **"Meistersinger von Nurnberg", Germany**
10mm - 12.24m (W) x 6.84m (H)
40' (W) x 22' (H)
- 3 **Opera House, Austria**
16mm - 9.14m (W) x 5.33m (H)
30' (W) x 17.5' (H)

Events & Entertainment

Motor Shows & Events



1



2



3

- 1 2010 President's Trophy Convention, Hong Kong**
Center:
7mm -10.16m (W) x 6.096m (H)
33.3' (W) x 20' (H)
Left & Right:
2 sets of 7mm screen each at
6.1m (W) x 4.6m (H)
20' (W) x 15' (H)
- 2 The 46th Daejong Film Awards, Korea**
4mm -7.68m (W) x 3.36m (H)
25.2' (W) x 11' (H)
- 3 2011 Korea CEDEX 2011, Korea**
4mm -7.04m (W) x 3.36m (H)
23.1' (W) x 11' (H)

Events & Entertainment

Motor Shows & Events



1 **YTL Concert of Celebration 2010, Singapore**

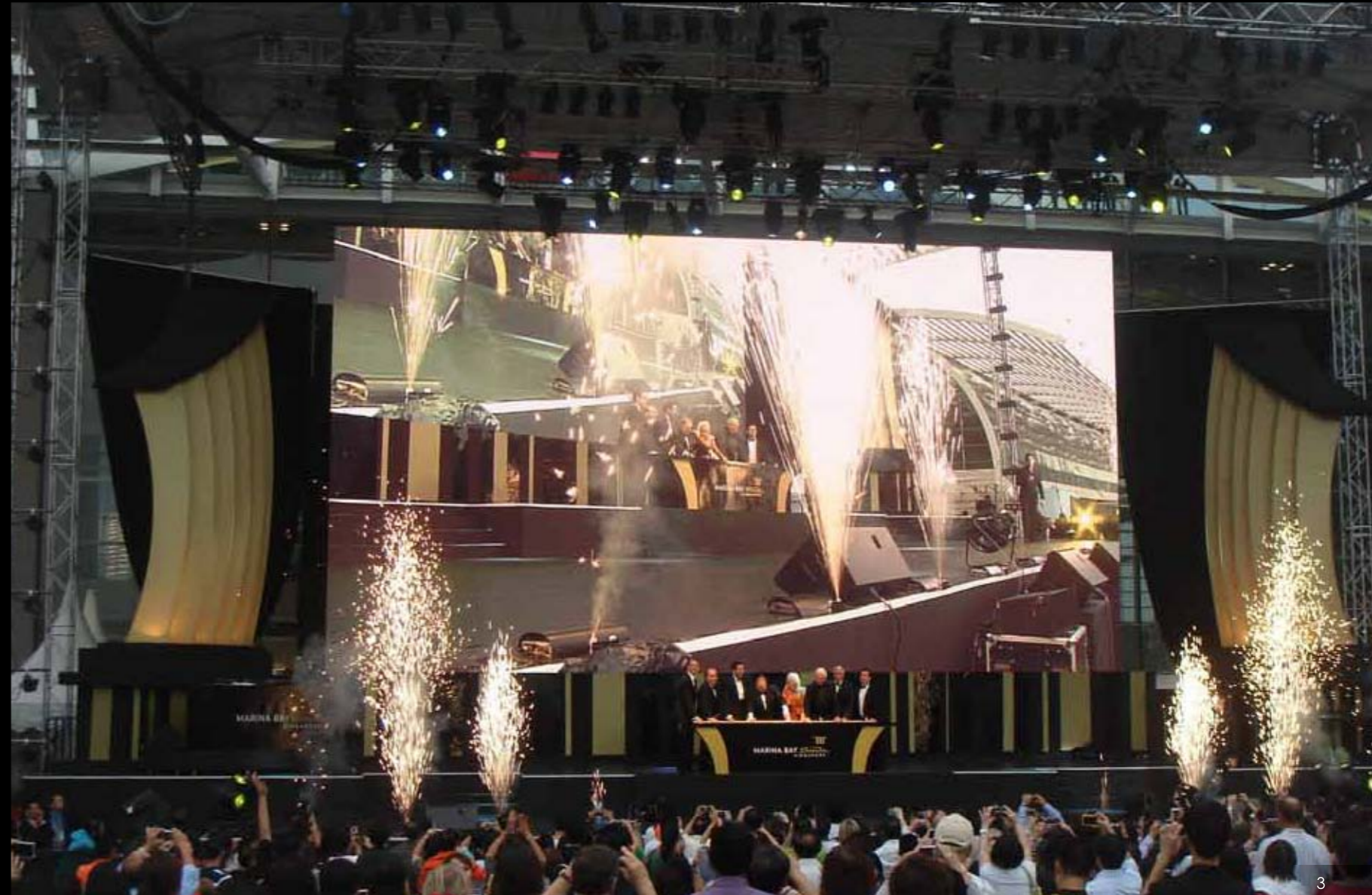
16mm - 5.08m (W) x 3.81m (H)
16.7' (W) x 12.5' (H)

2 **Nokia's Ovi map, UK**

7mm - 14.22m (W) x 3.04m (H)
46.7' (W) x 10' (H)

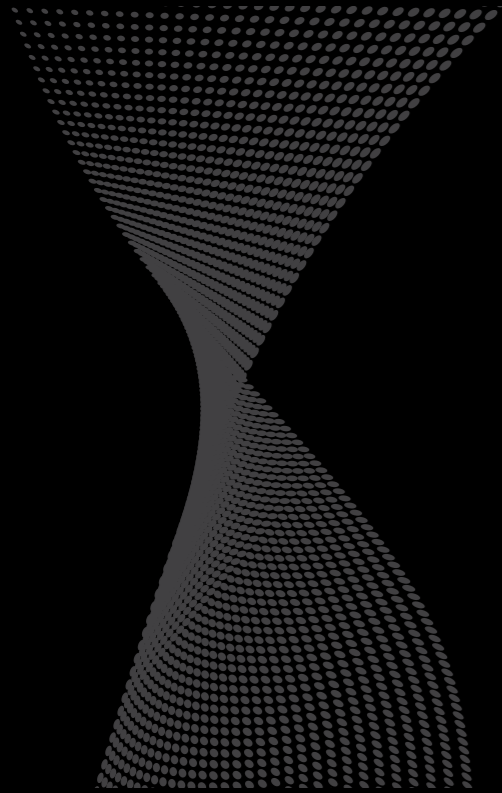
3 **Grand Opening of Marina Bay Sands, Singapore**

7mm - 15.3m (W) x 8.36m (H)
50.2' (W) x 27.4' (H)



Events & Entertainment

Motor Shows & Events



- 1 **MBC Drama OST Concert, Korea**
4mm - 7.68m (W) x 3.36m (H)
25.2' (W) x 11' (H)
- 2 **Valentino fashion show, Italy**
6mm - 6.4m (W) x 5.28m (H)
21' (W) x 17.3' (H)
- 3 **Donauinsel - Open Air Festival, Austria**



1



2



3

Events & Entertainment

Motor Shows & Events



1 **Bangkok International Motor Show, Thailand**

6mm - 3.84m (W) x 2.88m (H)
12.6' (W) x 9.4' (H)

2 **2011 Seoul Motor Show, Korea**

4mm - 8.32m (W) x 2.4m (H)
27.3' (W) x 7.9' (H)

3 **Hyundai Motor Veloster Launching Show, Korea**

4mm - 12.16m (W) x 4.8m (H)
39.9' (W) x 15.7' (H)

Events & Entertainment

VideoBlades™ 12



2



3

- 1 VideoBlades™ 12
- 2 VideoBlades™ 12
- 3 VideoBlades™ 12

Events & Entertainment

Broadcast



1



2



3



4

1 **Superbowl, Miami, US**
4mm - 1.92m (W) x 0.48m (H)
6.3' (W) x 1.6' (H)

2 **CBS Sports Set, US**
4mm - 2.56m (W) x 0.48m (H)
8.4' (W) x 1.6' (H)

3 **2010 SBS Ocean Explorer, Korea**
4mm - 6.4m (W) x 3.36m (H)
21' (W) x 11' (H)

4 **SBS Hundred Million Quiz Show, Korea**
Main Screen:
4mm - 10.88m (W) x 2.88m (H)
35.7' (W) x 9.4' (H)
Side Screen:
2 sets of 4mm screen each at
7.04m (W) x 1.92m (H)
23.1' (W) x 6.3' (H)



1

- 1 **Lo Canto, Italy**
10mm - 7680 pixel (W) x 576 pixel (H)
- 2 **2010 KBS Audience Column, Korea**
4mm - 3.84m (W) x 2.4m (H)
12.6' (W) x 7.9' (H)



2

Events & Entertainment

Broadcast



1



2



3

1 **California Lottery TV, US**
6mm - 10.24m (W) x 3.84m (H)
33.6' (W) x 12.6' (H)

2 **SBS Broadcast of 2010 Election, Korea**
4mm - 12.16m (W) x 4.8m (H)
39.9' (W) x 15.8' (H)

3 **Tamworth Country Musical Festival, Australia**
48 pcs of 12mm screen in various configuration

Events & Entertainment

Concerts



1



2



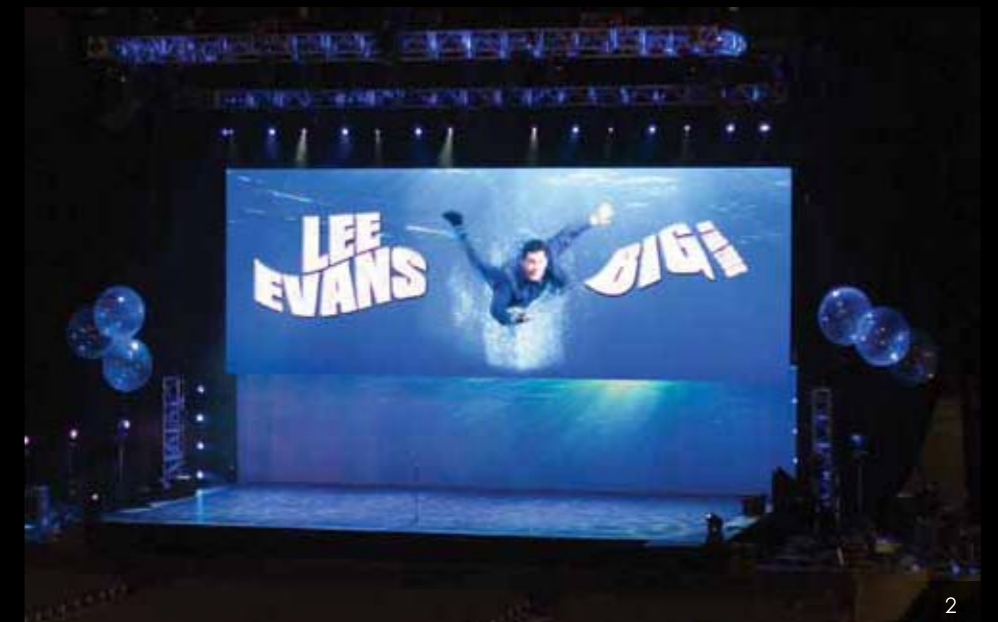
3

- Leehom Concert, Taiwan**
4mm - 6.4m (W) x 9.6m (H)
21' (W) x 31.5' (H)
- Hard Rock Calling, UK**
7mm - 7.11m (W) x 4.57m (H)
23.3' (W) x 15' (H)
- Coachella, US**
2 sets of DuoLED 18 each at
5.18m (W) x 9.79m (H)
17' (W) x 32' (H)

Events & Entertainment

Live Shows & Musicals

- 1 **Dirty Dancing Musical, US**
10mm - 6.4m (W) x 2.4m (H)
21' (W) x 7.9' (H)
- 2 **Lee Evans Big Tour, UK**
7mm - 10.16m (W) x 6.1m (H)
33.3' (W) x 20' (H)
- 3 **Michael McIntyre's 2009 UK arena tour, UK**
Main Screen:
7mm - 10.16m (W) x 6.1m (H)
33' (W) x 20' (H)
Side Screen:
2 sets of 7mm screen each at
5.08m (W) x 5.34m (H)
16.7' (W) x 17.5' (H)





State Farm

SMARTER HOME PHONE.

BI-MART

MATTHEW KNIGHT ARENA

OREGON	27	WSU	17
HALF 1		TO 5	
F		F	

ADVERTISING MESSAGE

ADVERTISING MESSAGE

Create Impact in Sports



Extra wide viewing angle



Sports

Whether required for scoreboards, action replays, live relay, public information or pitchside advertising, Lighthouse LED panels are the ideal answer for sporting venues and events.

Available in center-hung, fascia boards, curved, banner systems and many other formats, the wide viewing angles and image clarity ensure that nobody misses any information, even at acute angles to the screen, and advertiser's logos are always accurately displayed.

Lighthouse is recognized as a world leader in displaying high definition (HD) content. This is an increasingly essential element of sports video coverage.

Pitchside banners include rubber louvers, ensuring protection for players who may accidentally run into the screen. The small panel design and top or front access panels means that maintenance is straightforward, wherever the screen is installed - especially useful where space is limited.

These benefits and more are all included in Lighthouse's Impact series, which exceeds all the requirements of today's high standard, professional stadiums.

American Airlines Center, US

“Lighthouse and TS Sports showed us they have the experience and expertise to pull this huge project together, and get it done on time,” says Brad Mayne, president of the **Arena Center Operating Company**. “Now every Dallas sports fan will be able to enjoy the Mavs and Stars like they’ve never enjoyed them before.”

Top of Center-hung Octagon Shape:
16mm - 44.7m (W) x 1.14m (H)
146.7' (W) x 3.74' (H)

Center-hung:
4 sets of 10mm screen each at
8.96m (W) x 1.44m (H)
29.3' (W) x 4.7' (H)

Center-hung Main Screen:
4 sets of 4mm screen each at
8.96m (W) x 5.28m (H)
29.3' (W) x 17.3' (H)

Center-hung,
Round shape:
16mm - 28.51m (W) x 1.14m (H)
93.5' (W) x 3.74' (H)

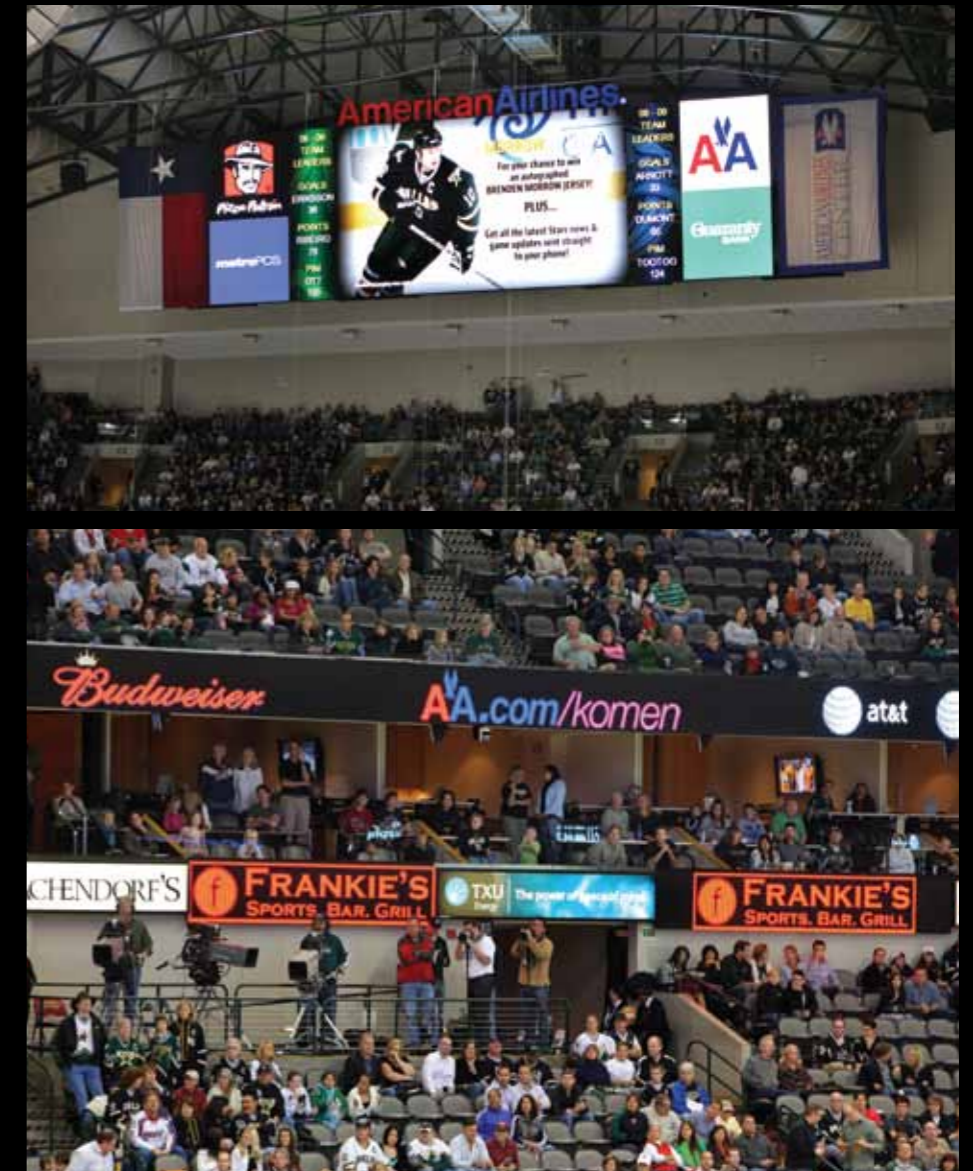
Platinum Level,
360 degree:
20mm - 273.92m (W) x 0.8m (H)
898.7' (W) x 2.6' (H)

Flagship Level:
8 sets of 20mm screen each at
3.84m (W) x 0.8m (H)
12.6' (W) x 2.6' (H)

End Game in Progress
Flagship Level:
2 sets of 20mm screen each at
8.96m (W) x 0.8m (H)
29.4' (W) x 2.6' (H)

Ice Hockey Ring, Dasher Board:
2 sets of 20mm screen each at
2.88m (W) x 0.64m (H)
9.4' (W) x 2.1' (H)

End Board Roof:
2 sets of 20mm screen each at
22.08m (W) x 6.4m (H)
72.4' (W) x 21' (H)





The World's 2nd largest
Center-hung!*

BC Place, Canada

“Lighthouse designs and develops cutting-edge LED video screens. Cree is proud to work closely with Lighthouse and offer our diverse and innovative Screenmaster LEDs for these high-quality, high-profile installations.”
said Mike Watson, senior director,
Cree LED components.

Center-hung Main Screen:
2 sets of 16mm screen each at
20.74m (W) x 11.52m (H)
68' (W) x 37.8' (H)
2 sets of 16mm screen each at
9.98m (W) x 6.34m (H)
32.7' (W) x 21' (H)

Pitchside:
10mm - 167.68m (W) x 0.96m (H)
550' (W) x 3.15' (H)

Fascia:
20mm - 552.32m (W) x 1.28m (H)
1812' (W) x 4.2' (H)

* As of 2011





Bradley Center, US

“You will see an image that will be eye-popping,” said Steve Costello, president of the **Bradley Center**. “It’s going to feel like you’re 10 feet away from your big-screen television at home, virtually everything is a display.”

Upper Square Ring:
10mm - 37m (W) x 0.96m (H)
121' (W) x 3.15' (H)

Scoring Matrix Square Ring:
10mm - 33.28m (W) x 1.76m (H)
109' (W) x 5.8' (H)

Center-hung Main Screen:
4 sets of 6mm screen each at
6.4m (W) x 3.84m (H)
21' (W) x 12.6' (H)

Corner Wedges:
4 sets of 16mm screen each at
1.01m (W) x 4.57m (H)
3.3' (W) x 15' (H)

Lower Square Ring:
10mm - 28.16m (W) x 0.8m (H)
92' (W) x 2.6' (H)

Underside Display:
16mm - 3.8m (W) x 3.8m (H)
12.5' (W) x 12.5' (H)

Pylon Video Display:
16mm - 5.33m (W) x 3.3m (H)
17.5' (W) x 11' (H)

Entry gate Video Display:
4 sets of 16mm screen each at
6.35m (W) x 1.27m (H)
20.8' (W) x 4.2' (H)





Michigan Stadium, University of Michigan, US

“TS Sports is excited about partnering with the University of Michigan on their LED video display upgrades. Michigan Stadium features our new Impact 16 video product from Lighthouse Technologies. The Impact 16 will provide Wolverine fans with the clearest video image in college sports.”
says Garry Waldrum, TS Sports.

2 sets of Impact 16 screen
each at 26m (W) x 14.4m (H)
85' (W) x 47' (H)



Yost Ice Arena,
University of
Michigan, US

“At Yost Ice Arena, the new system features 9 state-of-the-art Lighthouse LED video displays and an HD Operating System from Click Effects.” says Matt Ritter, **TS Sports**.

Center-hung Main Screen:
4 sets of 10mm screen each at
5.12m (W) x 4m (H)
16.8' (W) x 13' (H)

Center-hung Corner:
4 sets of 16mm screen each at
2m (W) x 3.81m (H)
6.6' (W) x 12.5' (H)

Bottom Ring:
16mm – 23.4m (W) x 0.76m (H)
76.8' (W) x 2.5' (H)





Crisler Arena, University of Michigan, US

“The new video system at Crisler Arena is a basketball fans dream. The system will feature 10 LED video displays from Lighthouse Technologies, tracking all major events through the game – Instant Replays, Fan Shots, Hustle Stats, Animations, Graphics and much more.”
says Matt Ritter, *TS Sports*.

Center-hung Top Display:
4 sets of 10mm screen each at
5.12m (W) x 1.92m (H)
16.8' (W) x 6.3' (H)

Center-hung Main Screen:
4 sets of 10mm screen each at
5.12m (W) x 3.68m (H)
16.8' (W) x 12.1' (H)

Center-hung Top Ring:
10mm – 25m (W) x 0.64m (H)
82' (W) x 2.1' (H)

Center-hung Bottom Ring:
10mm – 13.4m (W) x 0.64m (H)
44' (W) x 2.1' (H)

Center-hung Top Corner Display:
4 sets of 10mm screen each at
1.92m (W) x 1.92m (H)
6.3' (W) x 6.3' (H)





1



2

**Matthew Knight Arena,
University of Oregon, US**

- 1 Center-hung Upper Ring:
10mm - 34.5m (W) x 0.96m (H)
113' (W) x 3.15' (H)

Center-hung Main Screen:
4 sets of 6mm screen each at
5.76m (W) x 3.84m (H)
19' (W) x 12.6' (H)

Center-hung Lower Ring:
10mm - 19.8m (W) x 0.8m (H)
65' (W) x 2.6' (H)

Corner Display:
4 sets of 16mm screen each at
9.14m (W) x 3.04m (H)
30' (W) x 10' (H)

Fascia Display:
16mm - 168.6m (W) x 0.76m (H)
553' (W) x 2.5' (H)

Scorer Table:
10mm - 13.44m (W) x 0.64m (H)
44' (W) x 2' (H)

Media Board:
10mm - 3.84m (W) x 0.64m (H)
12.6' (W) x 2' (H)

- 2 Outdoor Screen:
2 sets of Impact 12 screen each at
3.07m (W) x 4.24m (H)
10' (W) x 13.9' (H)



Jeld Wen Field, US

Main Screen:
 16mm - 15m (W) x 5.5m (H)
 49' (W) x 18' (H)

Pitchside Display:
 10mm - 156m (W) x 0.96m (H)
 512' (W) x 3.1' (H)

Fascia:
 20mm - 15.36m (W) x 0.96m (H)
 50.4' (W) x 3.1' (H)





- 1 **McCoy Stadium, US**
20mm - 11.52m (W) x 6.12m (H)
37.8' (W) x 20' (H)
- 2 **Harrisburg Senators, US**
Videoboard:
19mm - 17m (W) x 6.1m (H)
56' (W) x 20' (H)
Outfield Wall Board
19mm - 22m (W) x 1.8m (H)
72' (W) x 6' (H)
Outfield Wall Board
19mm - 36.6m (W) x 1.8m (H)
120' (W) x 6' (H)
- 3 **Frederick Key's, US**
Main Screen:
19mm - 7.3m (W) x 5.5m (H)
24' (W) x 18' (H)
Auxiliary Screen:
12.5mm - 18.3m (W) x 1.2m (H)
60' (W) x 3.94' (H)



- 1 Midland Rockhounds, US
19mm - 7.31m (W) x 4.57m (H)
24' (W) x 15' (H)
- 2 San Angelo Colts, US
19mm - 6.4m (W) x 5.15m (H)
21' (W) x 16.9' (H)



1 **Texas Christian University, US**
North End Zone Display:
Impact 16 - 16.8m (W) x 9.2m (H)
55.4' (W) x 30.2' (H)

South End Zone Display:
Impact 16 - 8.4m (W) x 5.8m (H)
27.7' (W) x 18.9' (H)

2 **Mesquite Rodeo, US**
10mm - 5.76m (W) x 3.35m (H)
18.9' (W) x 11' (H)

3 **AT&T Center, US**
10mm - 5.12m (W) x 2.88m (H)
16.8' (W) x 9.45' (H)



- 1 **Sydney Football Stadium, Australia**
12.5mm - 12.8m (W) x 7.2m (H)
42' (W) x 23.6' (H)
- 2 **Lord's Cricket Ground, UK**
3 sets of 16mm screen each at
11.22m (W) x 6.1m (H)
36.8' (W) x 20' (H)
- 3 **Moses Mabhida Stadium, South Africa**
16mm - 14.28m (W) x 6.84m (H)
46.9' (W) x 22.4' (H)



Boashan Sports Center, China

Center-hung Top Ring:
4 sets of 16mm screen each at
5.08m (W) x 0.76m (H)
16.7' (W) x 2.5' (H)

Center-hung Scoreboard:
4 sets of 6mm screen each at
4.48m (W) x 0.96m (H)
14.7' (W) x 6.1' (H)

Center-hung Main Screen:
4 sets of 6mm screen each at
4.48m (W) x 2.4m (H)
14.7' (W) x 7.9' (H)

Center-hung Bottom Ring:
16mm - 14.22m (W) x 0.76m (H)
46.7' (W) x 2.5' (H)

Fascia:
16mm - 241.8m (W) x 0.76m (H)
793' (W) x 2.5' (H)

Outdoor screen:
20mm - 15.36m (W) x 8.96m (H)
50.4' (W) x 29.4' (H)





1



3



2



4

- 1 **Ausi's Racecourse Manager's Conference at Morphetville (SAJC), Australia**
2 sets of 10mm screen each at 6.4m (W) x 0.96m (H)
21' (W) x 3.1' (H)
- 2 **Kempton Park Horse Racetrack, UK**
12.5mm -3.2m (W) x 2.4m (H)
10.5' (W) x 7.9' (H)
- 3 **Wuhan Racecourses, China**
12.5mm -48m (W) x 10m (H)
157.5' (W) x 32.8' (H)
- 4 **San Rossore Horse Race Track, Italy**
12.5mm -9.6m (W) x 5m (H)
31.5' (W) x 16.4' (H)



1



2



3



4

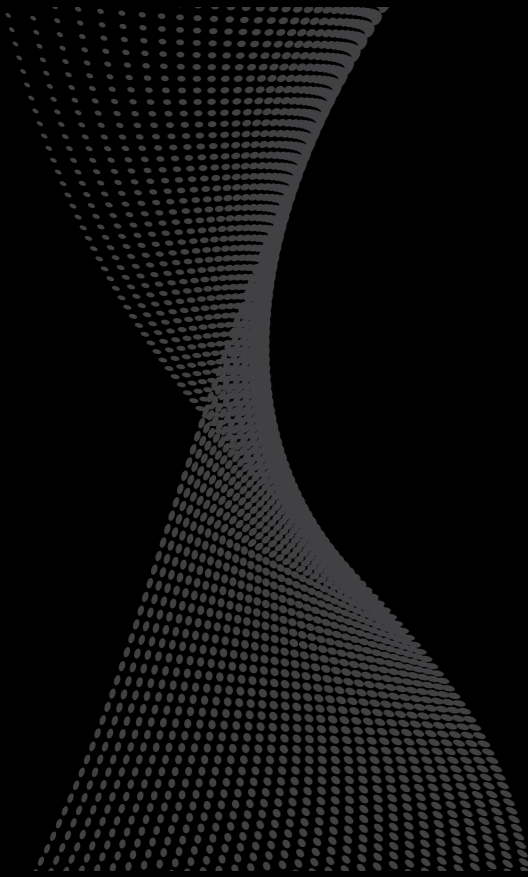
Ryder Cup, UK

“The pixel mapping for the Lighthouse Rn7-ER screen was exactly what we required for the 18th Studio screen,” comments CT project manager Jilon Miah. “All the screens were very reliable throughout, holding up well against the unusual weather we had there.”

- 1 **Ryder Cup, UK**
A total of 245 sqm of Lighthouse 7mm screen
- 2 **US Open 2011, US**
10mm - 5.12m (W) x 1.92m (H)
16.8' (W) x 6.3' (H)
- 3 **US Open 2011, US**
10mm - 6.4m (W) x 3.84m (H)
21' (W) x 12.6' (H)
- 4 **US Open 2011, US**
10mm - 6.4m (W) x 3.36m (H)
21' (W) x 11' (H)

Sports

Rental Installation



1 2011 Victor Korea Open, Korea

4mm - 5.12m (W) x 3.84m (H)
16.8' (W) x 12.6' (H)

2 Hong Kong Sevens 2011, Hong Kong

7mm - 7.11m (W) x 4.57m (H)
23.3' (W) x 15' (H)



- 1 Formula One, Dubai**
2 sets of 7mm screen each at
8.13m (W) x 6.1m (H)
26.7' (W) x 20' (H)
- 2 Euro 2008, Achern ,
Germany**
10mm - 7.11m (W) x 3.81m (H)
23.3' (W) x 12.5' (H)








1 **Formula One, Singapore**
2 sets of 16mm screen each at
7.14m (W) x 7.14m (H)
23.4' (W) x 23.4' (H)
6 sets of 16mm screen each at
6.12m (W) x 6.12m (H)
20.1' (W) x 20.1' (H)

2 **Bahrain Grand Prix, Bahrain**
7mm - 8.13m (W) x 6.1m (H)
26.7' (W) x 20' (H)





LIGHTHOUSE
CREATE IMPACT 

-  Lighthouse wishes to express its sincerest thanks to the contributors of the photos that appear in this book.
-  Lighthouse Technologies reserves the right to take legal action if any photos in this book are reused without Lighthouse's written consent.
-  All brands, products and logos appearing in this book other than our own are for identification purposes only, and may be trademarks of their respective holders.